



Installing the ActiveX MeadCo ScriptX Print Control in Internet Explorer



The ActiveX MeadCo ScriptX Print Control is required to properly view and print lab reports.

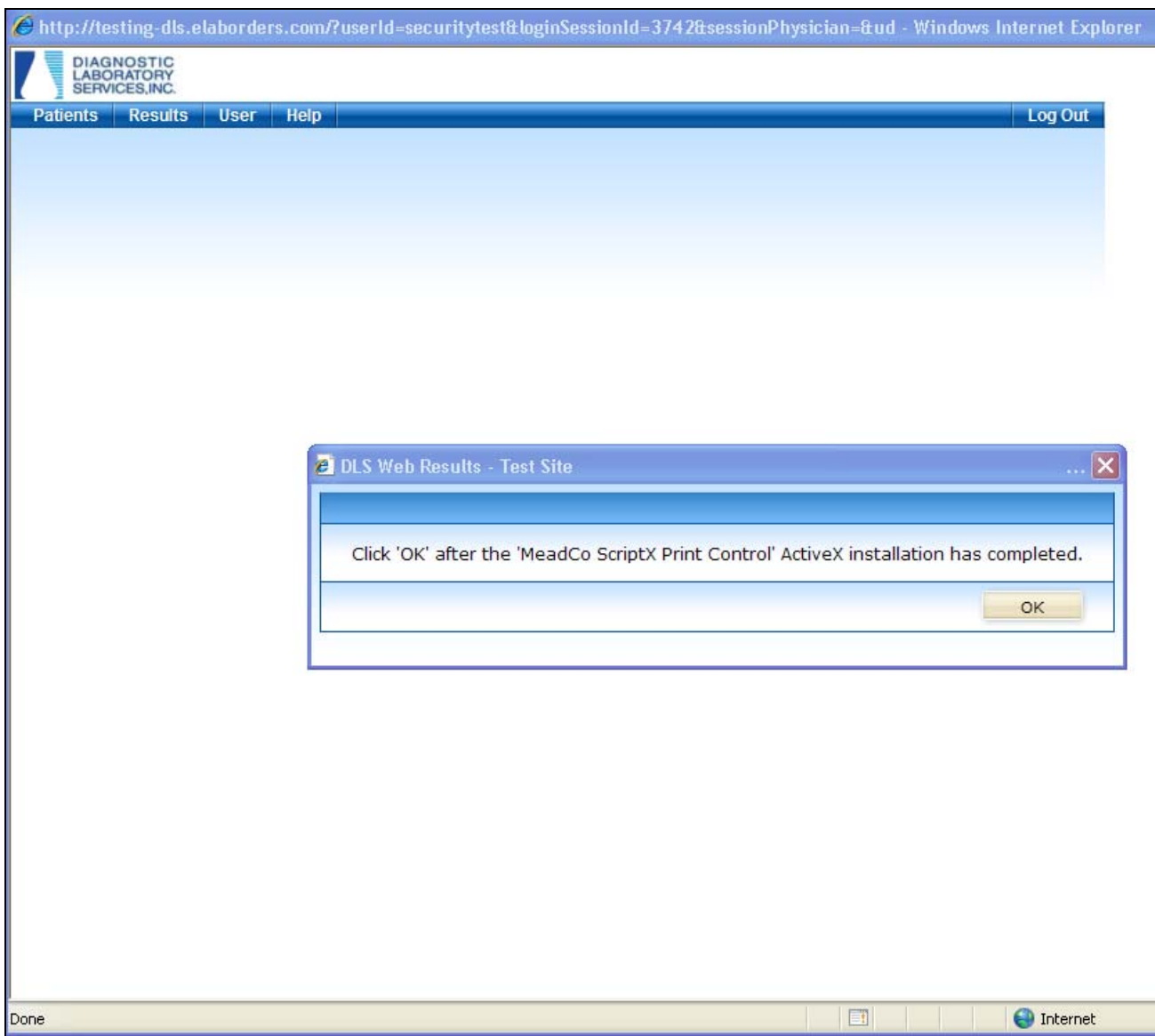
Requirements:

Windows based PC or laptop (Windows 7, Windows Vista, Windows XP).

Internet Explorer version 6 or higher.

**Screenshots may vary depending on version of Windows and/or Internet Explorer.*

If the MeadCo ScriptX Print Control is not installed the following message will appear upon login.





Installing the ActiveX MeadCo ScriptX Print Control in Internet Explorer



This window will pop up in the background and request to install the ActiveX control.

1. Click on the bar near the top of the web page,
2. Click "Install this add on for all users of this computer."

Atlas Print Control Installation Page - Windows Internet Explorer

http://testing-dls.elaborders.com/lwebapps/reports/ActiveXHost...

1. Click this bar

2. Click Install This Add-on for All Users on This Computer

This website wants to install the following add-on: 'MeadCo's ScriptX' from 'Mead & Company Limited'. If you trust the website and the add-on and want to install it, click here...

Install This Add-on for All Users on This Computer...
What's the Risk?
Information Bar Help

MeadCo ScriptX Print Control

Atlas LabWorks uses an ActiveX control named "MeadCo ScriptX Print Control" to automate document printing. The control is not required to use Atlas LabWorks. You will still be able to print documents if you choose not to install or are unable to install the control.

When the control is successfully installed, document printing is enhanced by:

- Eliminating the need for user interaction with the browser's Print dialog.
- Automatically setting proper margins on the printed document.
- Configurably directing certain documents (such as specimen labels) to specific printers.

Installing the MeadCo ScriptX Print Control

It has been determined that you do not have the most current print control installed. Please follow the prompts from your browser to install the control. If your browser is not prompting you to install the control, please contact an administrator for assistance.

Alternate Install for the MeadCo ScriptX Print Control

If you are having problems installing the control through the browser, try using one of the following:

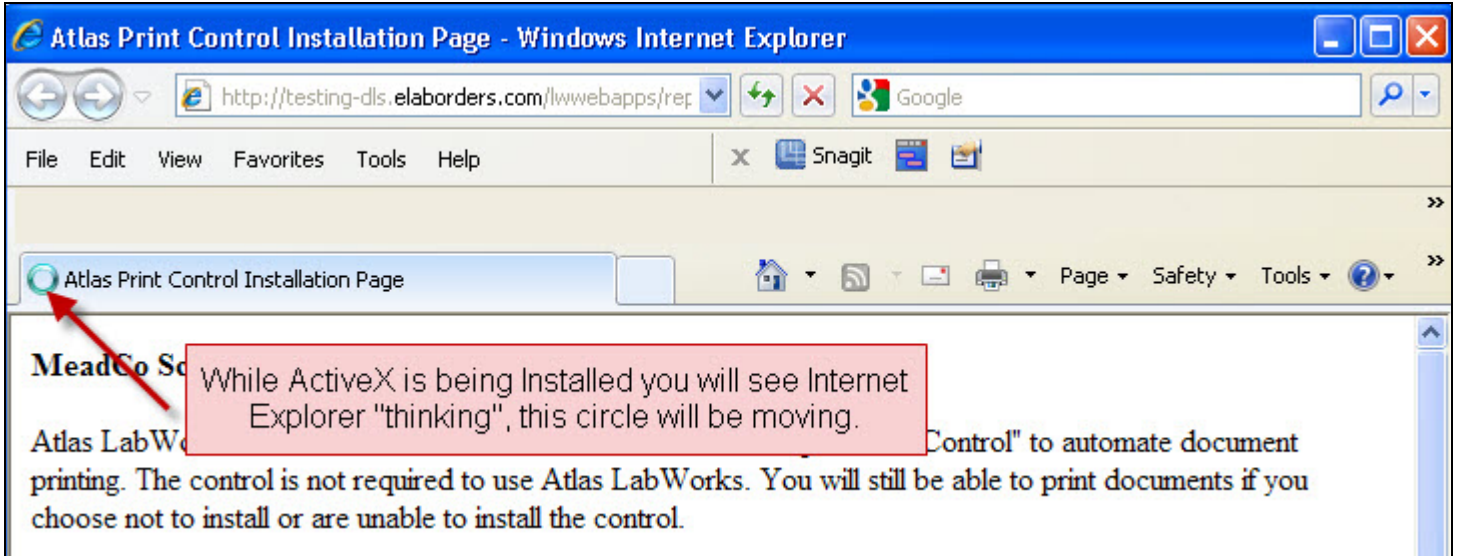
- [MeadCo ScriptX Print Control Alternate Install \(Executable\)](#)
- [MeadCo ScriptX Print Control Alternate Install \(Microsoft Installer\)](#)



Installing the ActiveX MeadCo ScriptX Print Control in Internet Explorer



You will see the circle on the Internet Explorer tab "thinking".



After ActiveX is done installing the thinking circle will turn to the Internet Explorer E. This pop-up window can now be closed.

